

Job Corps Center Physicians Monthly Teleconference

John Kulig MD MPH

Drew Alexander MD

Sara Mackenzie MD MPH

Gary Strokosch MD

Region 1 Boston & Region 2 Philadelphia

Region 4 Dallas

Region 6 San Francisco

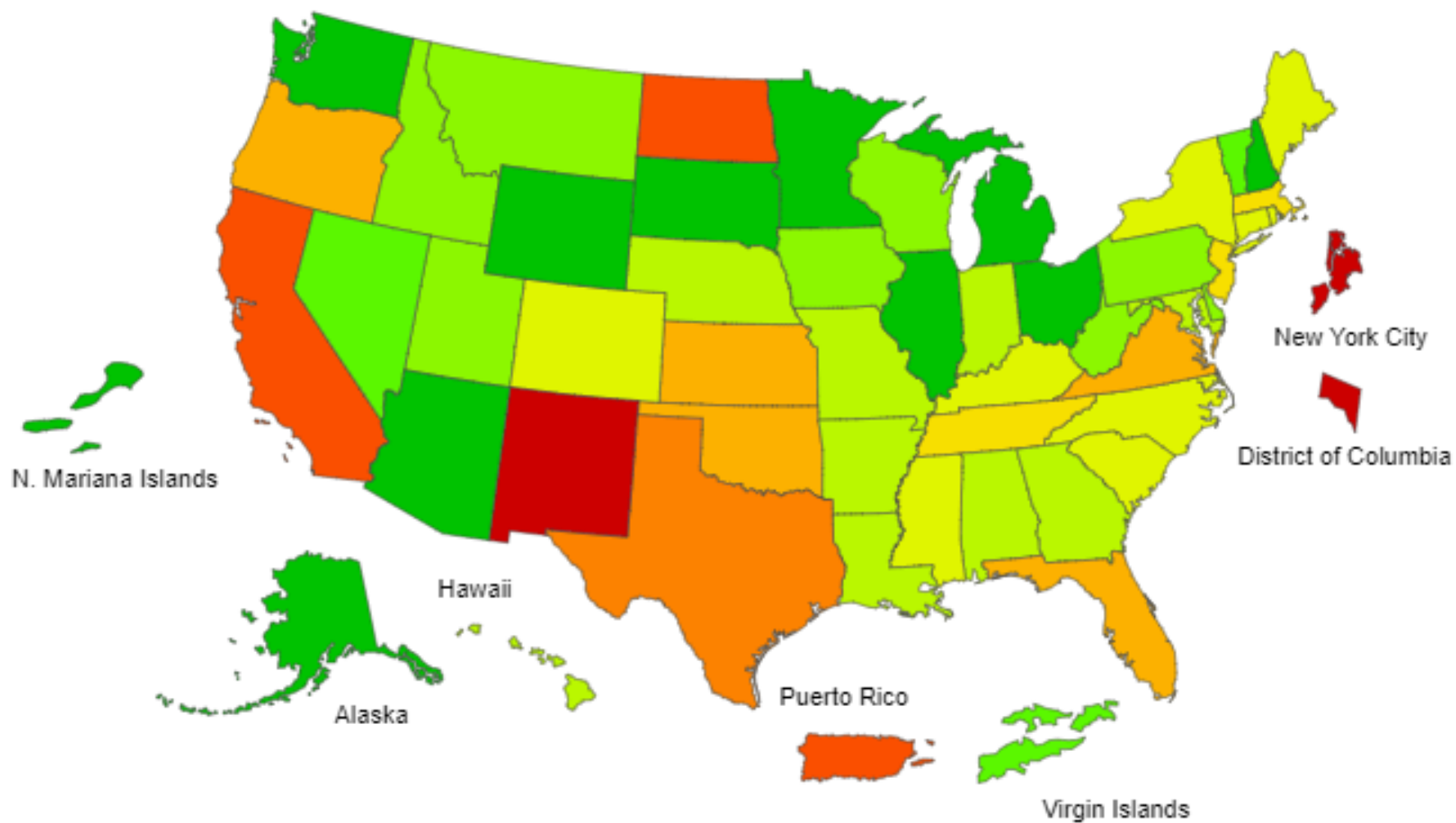
Region 3 Atlanta & Region 5 Chicago

HIPAA compliant messages use @jobcorps.org email address

Wednesday, February 22nd, 2023

2022-23 Influenza Season Week 2 ending Jan 14, 2023

ILI Activity Level



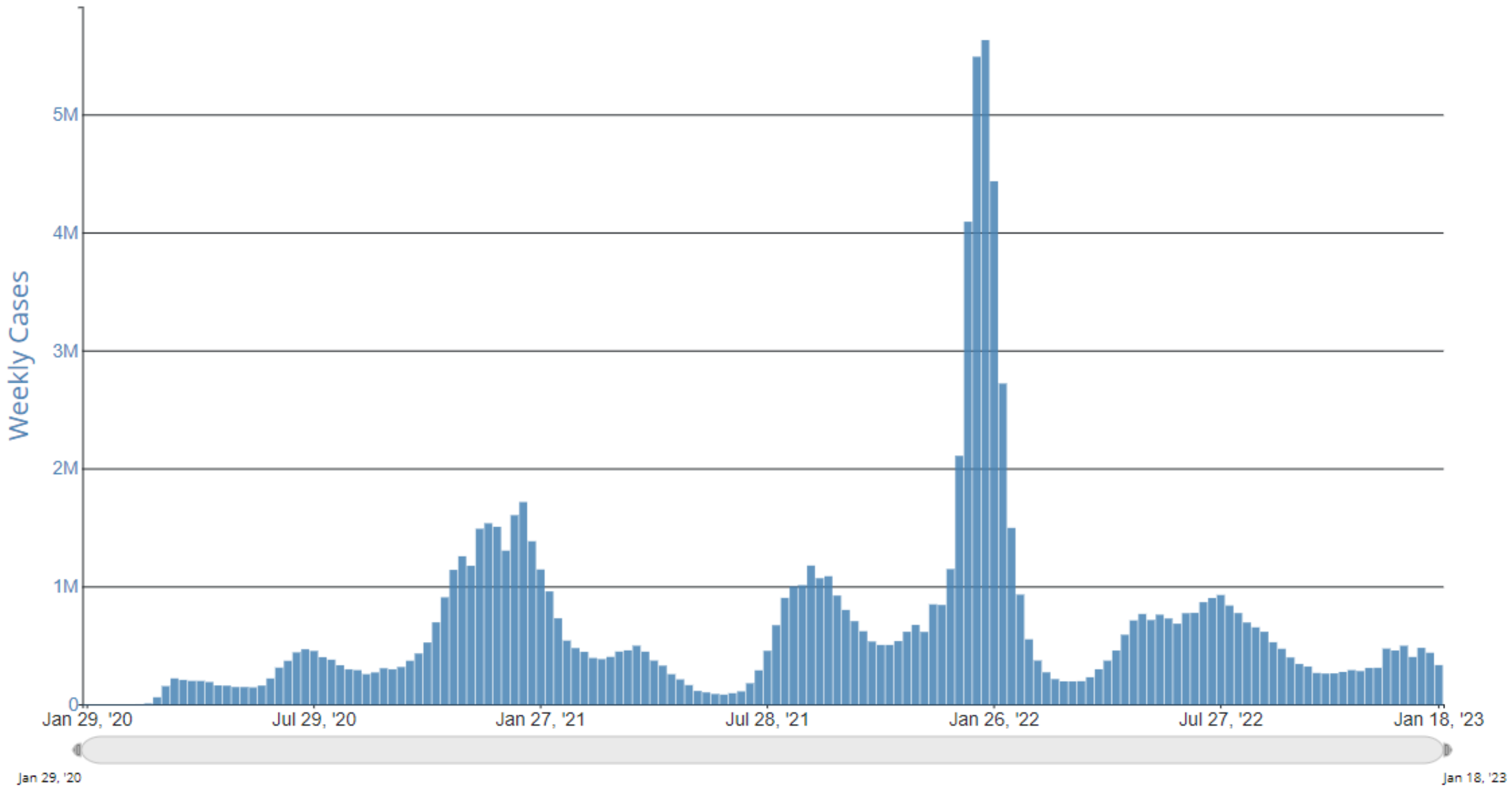
Key Points: Seasonal influenza

- Seasonal influenza activity continues to decline across the country.
- Of influenza A viruses detected and subtyped during week 2, 81% were influenza A(H3N2) and 19% were influenza A(H1N1).
- CDC estimates that, so far this season, there have been at least 25 million illnesses, 270,000 hospitalizations, and 17,000 deaths from flu.
- The majority of influenza viruses tested are in the same genetic subclade as and antigenically similar to the influenza viruses included in this season's influenza vaccine.
- All viruses collected and evaluated this season have been susceptible to the influenza antivirals oseltamivir, peramivir, zanamivir, and baloxavir.

Key Points: Seasonal influenza

- An annual flu vaccine is the best way to protect against flu. Vaccination helps prevent infection and can also prevent serious outcomes in people who get vaccinated but still get sick with flu.
- CDC continues to recommend that everyone ages 6 months and older get an annual flu vaccine as long as flu activity continues.
- CDC issued [Interim Guidance for Clinicians to Prioritize Antiviral Treatment of Influenza in the Setting of Reduced Availability of Oseltamivir](#) through the Health Alert Network (HAN) on December 15, 2022.

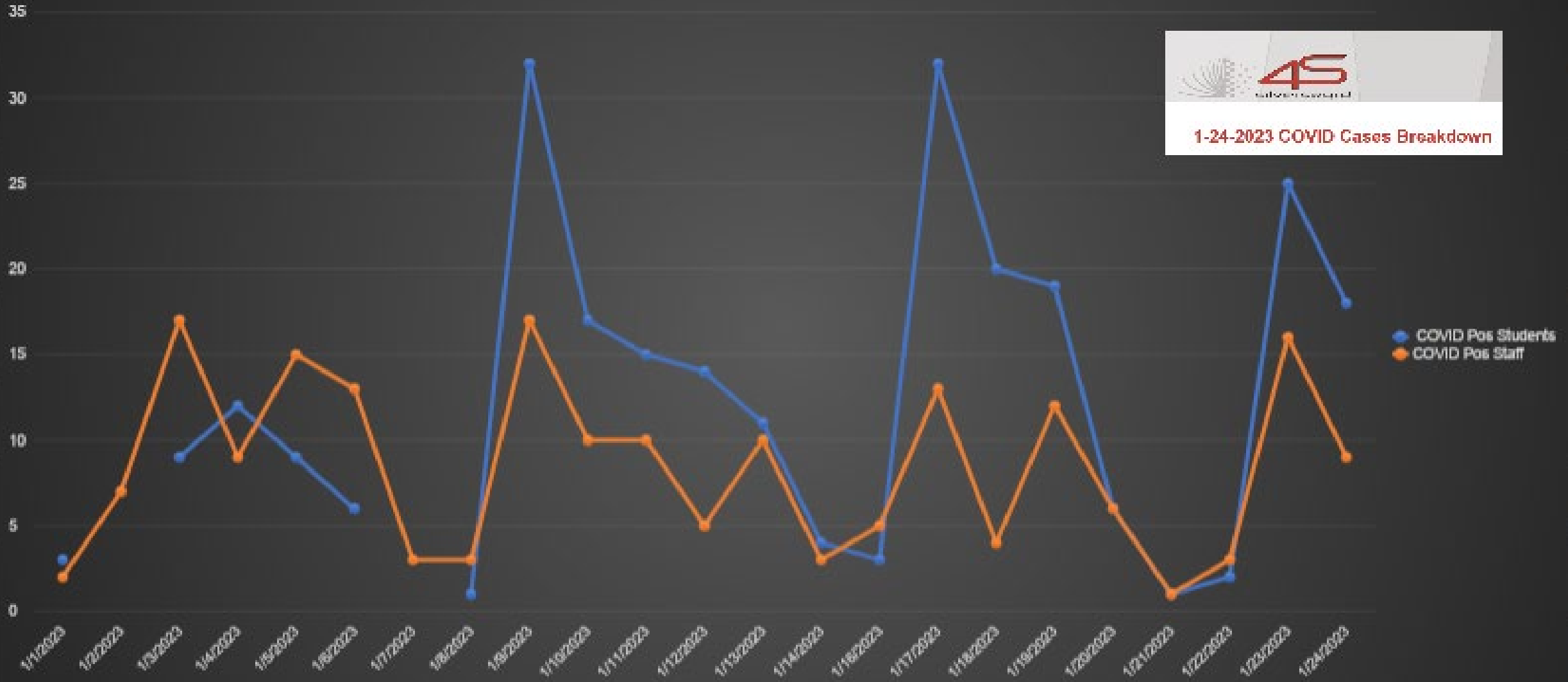
Weekly Trends in Number of COVID-19 Cases in The United States Reported to CDC



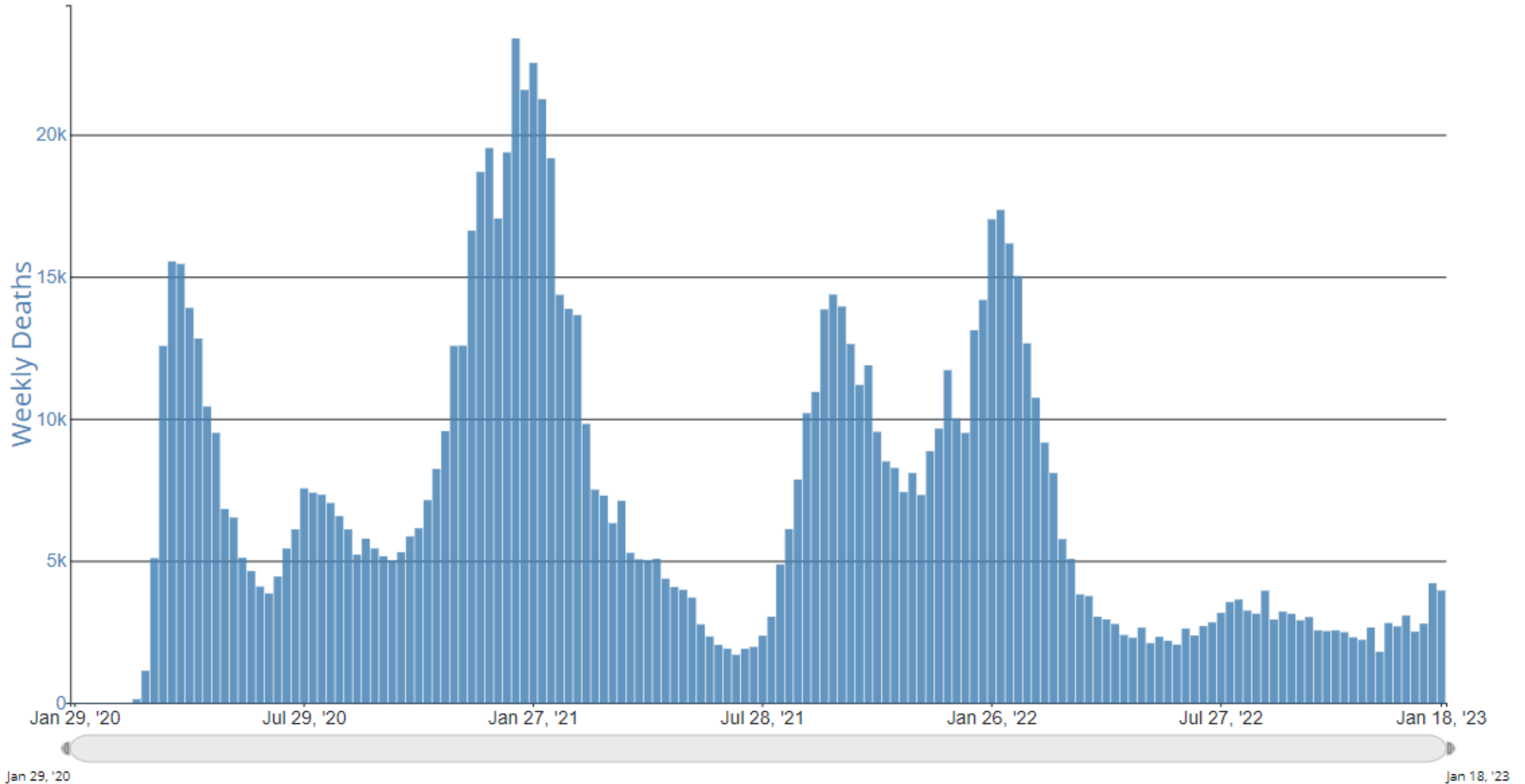
Covid Cases Positives Since 1/1/2023



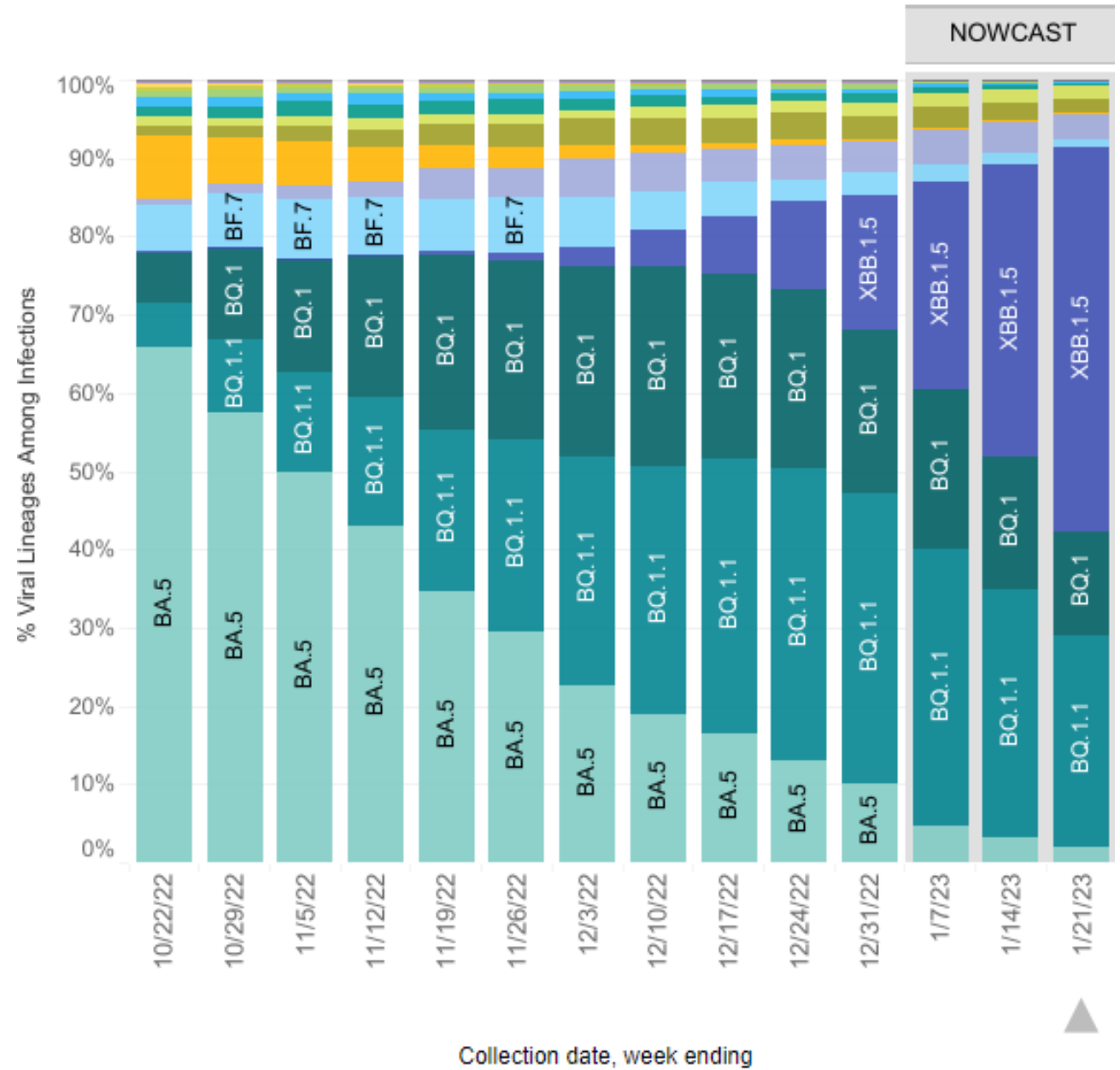
1-24-2023 COVID Cases Breakdown



Weekly Trends in Number of COVID-19 Deaths in The United States Reported to CDC

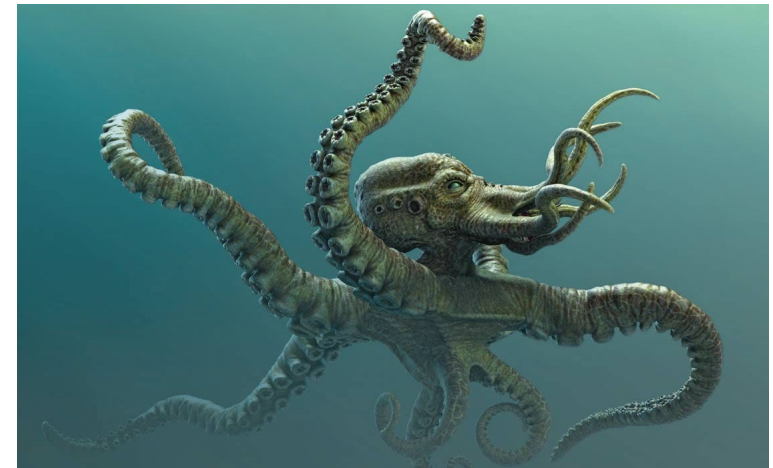


CDC Genomic Surveillance: Monitoring variants



New COVID-19 Variant

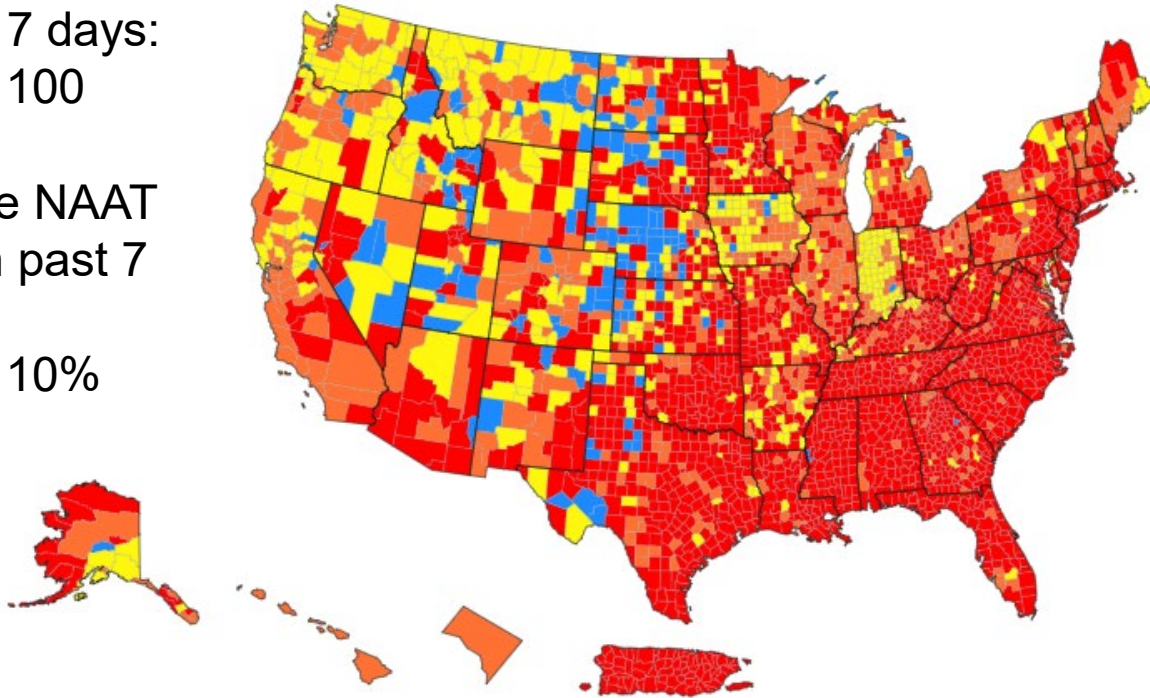
- Omicron XBB.1.5 now accounts for about half of all US cases
- Most transmissible variant to date – highly communicable
- Variant is a sublineage of a recombinant of two other Omicron offshoots
- Nicknamed “Kraken”- legendary sea creature and Seattle NHL hockey team
- Symptoms may include runny nose, sore throat, cough, headaches, fever, loss of appetite, diarrhea, body aches, shortness of breath
- Severe illness, altered taste and smell less likely
- XBB.1.5 variant can be detected by standard antigen testing kits



Community transmission

New cases per
100,000
in past 7 days:
High > 100

Positive NAAT
tests in past 7
days:
High > 10%



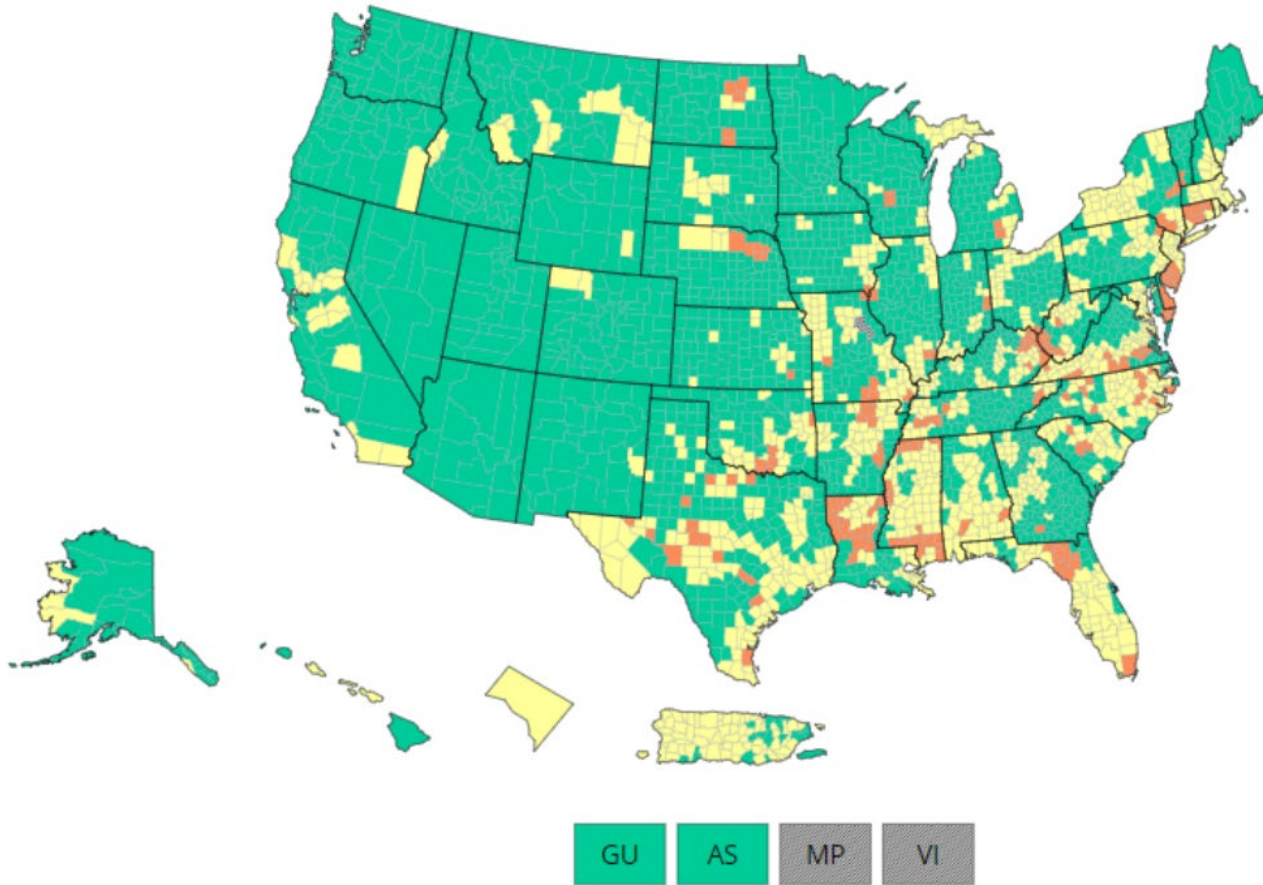
Community Transmission in US by County

	Total	Percent	% Change
High	1975	61.3%	- 13.69%
Substantial	625	19.4%	4.87%
Moderate	472	14.65%	7.88%
Low	150	4.66%	0.93%

● High ● Substantial ● Moderate ● Low ● No Data

Current 7-days is Jan 12-18, 2023, for case rate and
Jan 10-16, 2023, for percent positivity.

Community levels



COVID-19 Community Levels in US by County

	Total	Percent	% Change
High	196	6.09%	- 7.46%
Medium	1010	31.38%	- 6.94%
Low	2013	62.53%	14.4%

● Low ● Medium ● High ● No Data

COVID-19 Community Levels were calculated on Thursday Jan 19, 2023.

Determining COVID-19 Community Levels

New Cases ¹ (per 100,000 population in the last 7 days)	Indicator	Low	Medium	High
<200 cases	New COVID-19 admissions per 100,000 population (7- day total) ²	<10.0	10.0-19.9	≥20.0
	Percent of staffed inpatient beds in use by COVID-19 patients (7-day average) ³	<10.0%	10.0-14.9%	≥15.0%
≥200 cases	New COVID-19 admissions per 100,000 population (7- day total)	NA	<10.0	≥10.0
	Percent of staffed inpatient beds in use by COVID-19 patients (7-day average)	NA	<10.0%	≥10.0%

The COVID-19 Community Level is determined by the higher of the new admissions and inpatient beds metrics, based on the current level of new cases per 100,000 population in the past 7 days.

Open Forum



<https://www.surveymonkey.com/r/>

Job Corps Center Physicians Monthly Teleconference

Next call: Wednesday, March 29th, 2023

→ Note 5th Wednesday! ←

John Kulig MD MPH

Drew Alexander MD

Sara Mackenzie MD MPH

Gary Strokosch MD

Region 1 Boston & Region 2

Philadelphia Region 4 Dallas

Region 6 San Francisco

Region 3 Atlanta & Region 5 Chicago

HIPAA compliant messages: use @jobcorps.org email address

<https://www.surveymonkey.com/r/>